

8. Heilig (Hirtelied)

Melodie und Text: Alex Kurz
Aus dem Musical "Rohrbacher Wiehnacht"

Intro

Piano introduction in 4/4 time, key of C minor. The music consists of sustained chords in both the treble and bass staves, creating a solemn atmosphere.

Vers 1

Vocal melody for the first line of the first verse, in 4/4 time, key of C minor. The melody is simple and melodic, starting on a half note and moving in a stepwise fashion.

1. Hei - lig, i - re stil - le Nacht be - rührt der Him - mel d Är - de.

Piano accompaniment for the first line of the first verse, in 4/4 time, key of C minor. The accompaniment features sustained chords, with the label 'Cm' indicating the chord in the first measure.

Vocal melody for the second line of the first verse, in 4/4 time, key of C minor. The melody continues the stepwise motion from the first line.

Hei - lig, im ne chly - ne Chind wott Gott, dass nöis söll wär - de.

Piano accompaniment for the second line of the first verse, in 4/4 time, key of C minor. The accompaniment continues with sustained chords.

Vocal melody for the third line of the first verse, in 4/4 time, key of C minor. The melody concludes the first verse with a final half note.

Hei - lig, mir sy Gott nid glych. Hei - lig und es chunnt sys Rych.

Piano accompaniment for the third line of the first verse, in 4/4 time, key of C minor. The accompaniment concludes with sustained chords.

All - ne, wo druf hof - fe steit der Him - mel of - fe.

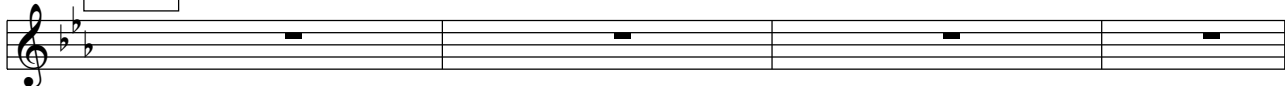
Hei - lig, und es blybt nid chly. Hei - lig, är wird Ret - ter sy.

Ei - nisch wird das chly - ne Chind der Ret - ter sy, wo zahlt für d Sünd.

Hei - lig, i der Dun - kel - heit er - schynt üs Gott, bringt Liecht und Fröid.

A^b B^b F

Inter



Cm

Vers 2

2. Hei - lig, für die Chran - ke, für die Schwa - che, für die Ar - me.

Cm E^b B^b Cm E^b/G A^b B^b

Hei - lig, dür sy Lie - bi, dür sy Chraft, dür sys Er - bar - me.

Cm E^b B^b Fm E^b/G A^b B^b

Hei - lig, won is Chum - mer quält. Hei - lig, wo ds Ver - trou - e fählt.

A^b Fm E^b B^b Fm A^b E^b B^b

Je - sus Chrisch - tus, kei - ne süsch git was üs Mön - sche heil - sam isch.

Fm Gm A^b B^b A^b/C A^b B^b

Hei - lig, i der Dun - kel - heit er - schynt üs Gott, bringt Licht und Fröid.

Cm Gm B^b E^b E^b/G A^b B^b F

Solo

Cm E^b B^b Cm E^b/G A^b B^b

Cm E^b B^b Fm E^b/G A^b B^b

A^b Fm E^b B^b Fm A^b E^b B^b

Fm Cm B^b Fm A^b B^b

Schluss

Hei - lig, mir sy Gott nid glych. Hei - lig und es chunnt sys Rych.

A^b Fm E^b B^b Fm A^b E^b B^b

Ei - nisch wird das chly - ne Chind der Ret - ter sy, wo zahlt für d Sünd.

Fm Gm A^b B^b A^b/C A^b B^b

Hei - lig, i der Dun - kel - heit er - schynt üs Gott, bringt Liecht und Fröid.

Cm Gm B^b E^b E^b/G A^b B^b F