

CHRISTOF FANKHAUSER

Was gisch - was hesch



Flötenstimmen

Rechte beim Autoren

Christof Fankhauser
Hofmattstrasse 41a
4950 Huttwil

062 / 965 43 16
mail@christoffankhauser.ch
www.christoffankhauser.ch

(4) Är isch truurig - Flöte

Aus der CD "Was gisch - was hesch" - Musik und Text: Christof Fankhauser - www.christoffankhauser.ch

Intro

The Intro consists of two staves of music. The first staff is a single melodic line in G major, 4/4 time, starting with a quarter note G4, followed by eighth notes A4, B4, C5, B4, A4, G4, and ending with a quarter note G4. The second staff continues the melody with eighth notes G4, A4, B4, C5, B4, A4, G4, and ends with a quarter note G4.

Refrain

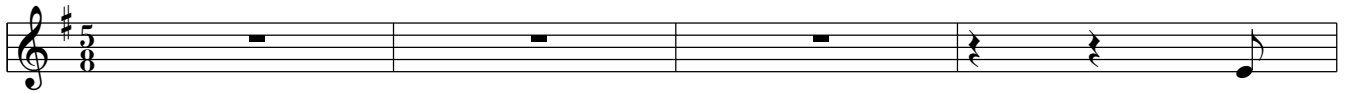
The first part of the Refrain features a piano accompaniment with two staves. The melody is on the upper staff, and the bass line is on the lower staff. The lyrics are: "Är isch tru - rig, ä isch tru - rig, är". The chords are Em, D/E, Am, and Em.

The second part of the Refrain features a piano accompaniment with two staves. The melody is on the upper staff, and the bass line is on the lower staff. The lyrics are: "grän - net je - de Tag u hü - let je - di Nacht. Är isch". The chords are Em, D/F#, G, Am, and H4.

The third part of the Refrain features a piano accompaniment with two staves. The melody is on the upper staff, and the bass line is on the lower staff. The lyrics are: "truu - rig, är isch tru - rig u nie - mer cha ne". The chords are Am, Em/G, H4/F#, H7, and Em.

The final part of the Refrain features a piano accompaniment with two staves. The melody is on the upper staff, and the bass line is on the lower staff. The lyrics are: "trösch - te; Truur isch e dunk - li Macht." The chords are Am/E, Em, D, Cmaj7, and A2. The piece ends with a double bar line and a 5/8 time signature.

Vers



1. Nid
2. Nid

A **Em**

wüll är sich bim u - me - ren - ne d Chnöi uf - gschla - ge het
wüll är Nach - bers Fänsch - ter - schie - be het i - gschla - ge gha

A **Em**

o - der das nid ü - ber - chunnt, won är scho lang - gärn wett. Nid
u wäg dä m de oh - ni Znacht i ds Bett het mües - se gah. Es

C **G** **D4** **D**

wüll sie nu - me ihn bim Spiel nid het mit - ma - che la, nid
isch nid wäg de Lüt, wo ü - ber sie so gschum - pfe hei: "die

Em **D/F#** **G** **Am** **H4**

wäg de bö - se Wort wo sie gäg ihn hei gwor - fe gha.
si so riich u hei viel Gäld u ma - che, was sie wei."

H **C** **D/C** **G/H** **D/A** **G**

Nei, ds liebsch - te won är ü - ber - haupt uf de - re Wält het gha,

Em **Am** **D**

d Ma - ma u der Pa - pa si plötz - lech nüm - me da.

(10) Wieder Freud - Flöte

Aus der CD "Was gisch - was hesch" - Musik und Text: Christof Fankhauser - www.christoffankhauser.ch

Refrain

Ref. Hüt chasch wie - der la - che, d Freud isch wie - der

da. Es Härz wo ü - ber - spru - dlet, da chasch nid blie - be

stah. Ds Glück rütscht dir i d Bei, du fasch mit Tan - zen

a u singsch es i die gan - zi Wält: e neu - i Zyt isch da

Inter

Vers

Dm C F F Bb

1. Dunk - li Schät - te ma - chen Angscht u drü - cke schwär uf

C F Bb F

ds Härz. Suech im - mer ds Liecht, ou we ds nid gseh u

C Bb C

lueg geng him - mel - wärts.

Outro

(29) I mache mi uf - Flöte

Aus der CD "Was gisch - was hesch" - Text und Musik: Christof Fankhauser - www.christoffankhauser.ch

Intro 1
D G D G D G D G

Intro 2
D G A D D G Hm A

Refrain

I ma - che mi uf u lue - ge nid i, uf

dy - ni Hilf chan i hof - fe, ver - trou - e uf di. I

ma - che mi uf u blie - be nid stah,

zeigsch mir der Wäg, u bisch im - mer da.

Outro

D G A D D G

Hm A D G A D D G

Hm A D